

# INTERNAL CABINETS WITH METAL MOUNTING PLATES

## FOR LAUNCH AMPLIFIERS, MULTISWITCHES AND INSTALLATION ACCESSORIES




REF.	ART. NR.	DESCRIPTION	EAN 13
5893	MPTGH34	INDOOR CABINET W/MOUNT.PLATE 300x400x200mm	4031136070526
589301	MPTGH44	INDOOR CABINET W/MOUNT.PLATE 400x400x200mm	8424450185698
589302	MPTGH46	INDOOR CABINET W/MOUNT.PLATE 400x600x200mm	8424450185704
589303	MPTGH66	INDOOR CABINET W/MOUNT.PLATE 600x600x200mm	8424450185711
589304	MPTGH68	INDOOR CABINET W/MOUNT.PLATE 600x800x200mm	8424450185728

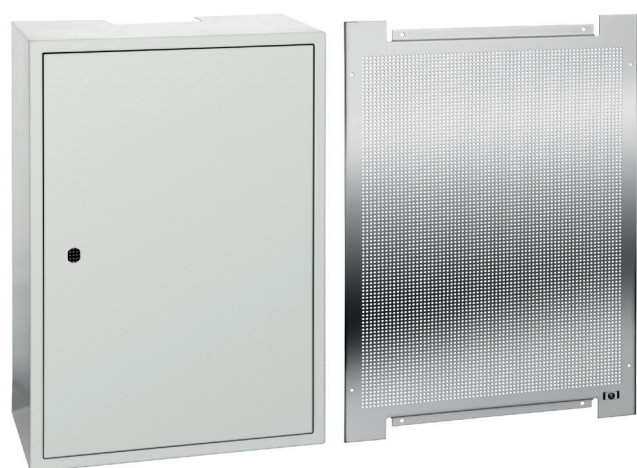


**Lockable cabinets that include a perforated back plate to install multiswitches, amplifiers and other system components.** Equipment can be installed on the plate (on site or in the workshop) then fitted within the cabinet restricting access to unauthorized personnel.

- Cabinets have internal and external slots to introduce the signal cable.
- Designed for **internal installations only** (IP20 protection).
- Lock and keys included.
- 120cm earth cable.



REF.	ART. NR.	 mm	 kg	 U./Packing
5893	MPTGH34	300 x 400 x 200	5.12	1 / box
589301	MPTGH44	400 x 400 x 200	6.68	1 / box
589302	MPTGH46	400 x 600 x 200	9.12	1 / box
589303	MPTGH66	600 x 600 x 200	12.20	1 / box
589304	MPTGH68	600 x 800 x 200	16.56	1 / box



REF. 589302



REF. 5893