

## Lower section pivoting, Zinc + RCP 180 tower

3m lower section pivoting for the erection of a 180 tower.

Guy wires are required for pivoting sections.

---

<b>Ref.</b>	3037
<b>Logical ref.</b>	TFUSS180
<b>EAN13</b>	8424450136553

---

### Other features

---

<b>Colour</b>	Grey
<b>Finishing</b>	Zinc + RCP

---

### Packaging info

---

<b>Unit</b>	1 pcs.
-------------	--------

---

### Physical data

---

<b>Photo with dimensions</b>	3.00
<b>Net weight</b>	12,500.00 g
<b>Gross weight</b>	12,500.00 g
<b>Width</b>	180.00 mm
<b>Height</b>	3,000.00 mm
<b>Depth</b>	165.00 mm
<b>Main product weight</b>	12,796.00 g

---

### Highlights

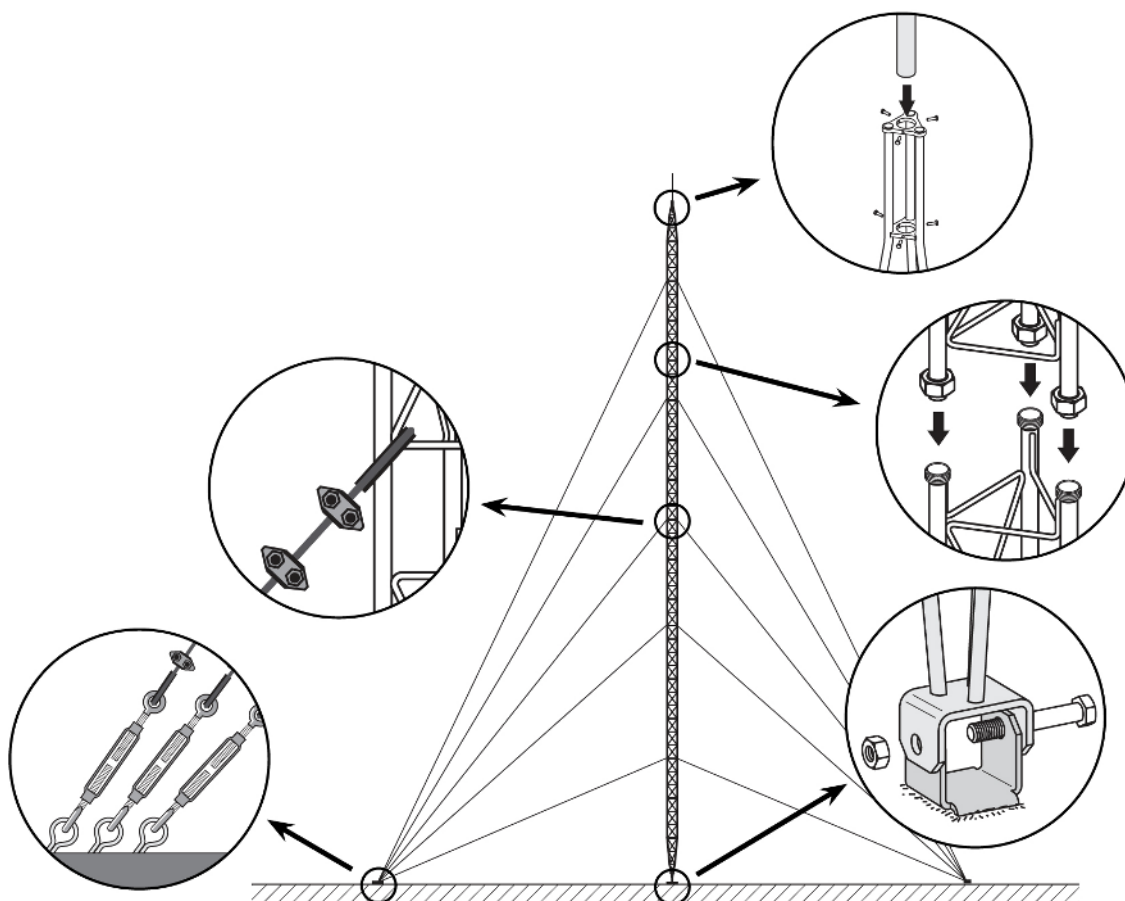
- Anchoring system with union nuts
- Easy and quick mounting
- Fully automated soldering

- 180 tower maximum height: 26.5m (as per calculation conditions)
- Zinc coating + RCP
- Grey finish
- Main tubes of 20\*2 mm and transverse rods of 6 mm

## Mounting details

---

It consists in fixing the lower section to the base, set it in upright position and levelling it. The subsequent Middle Sections are then mounted, equipped with the appropriate guy wires; the mounting is carried out by climbing on the previously mounted sections and hoisting the new section with the help of the appropriate lifting tools.



## Technical specifications : Ref. 3037

Surface facing the wind	m <sup>2</sup>	0.273
-------------------------	----------------	-------