

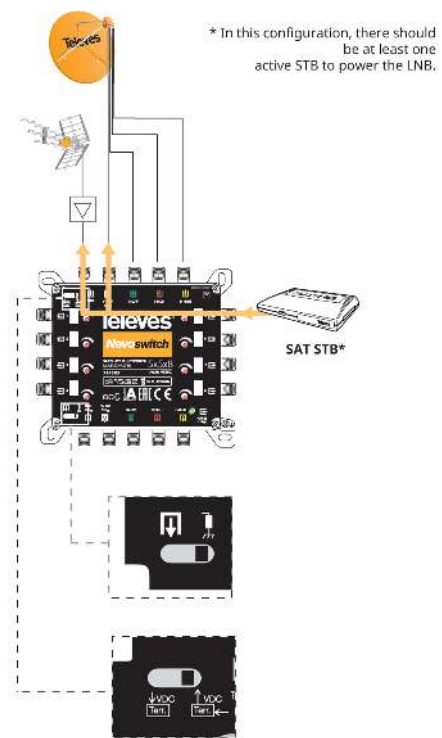
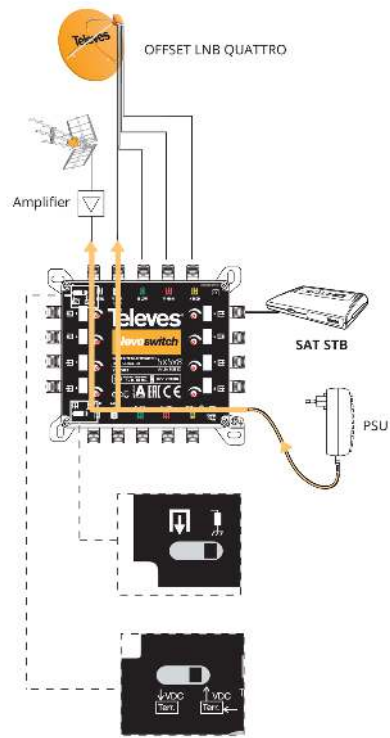
- Can be powered directly from the satellite receiver, without the need for a power supply unit*
- Remote power feeding using VL
- Current circulation between all inputs and cascades
- Active terrestrial
- European design, quality, and manufacturing

Main features

- Very compact
- Made of zamak
- Input and output colour identification
- Available ECO mode
- Selector switch to shift between cascade and terminal modes
- 12 V power supply
- Low power consumption

Application example





Technical specifications : Ref. 714505

Number of inputs		5
Number of cascadable outputs		5
Number of user outputs		16
Frequency range TERR.	MHz	47 ... 862
Frequency range SAT.	MHz	950 ... 2400
Input level TERR.	dBµV	92
Input level SAT.	dBµV	105
Through losses TERR.	dB	4
Through losses SAT.	dB	3 ... 8
Tap losses 1...8 TERR.	dB	2
Tap losses 1...8 SAT.	dB	1
Tap losses 9...16 TERR.	dB	4
Tap losses 9...16 SAT.	dB	2
Tap regulation range	dB	0 ... 12
Isolation H/V	dB	> 30
Isolation users	dB	> 25
Powering	Vdc	12
Max. current (PSU)	mA	105
Max. current (STB)	mA	35
Operating temperature	°C	-5 ... 45
Protection index		20