



Overlight Quad Optical Receiver FM/DAB/UHF/SAT

Enhanced electronics and optical engineering to light up your TV

This complete optical Wideband satellite and terrestrial receiver captures the TV optical signal on a single fiber (1200...1600nm) and restores the original terrestrial and satellite TV signals, providing 4 RF outputs with Quad mode: the four polarities and bands are provided on each connector.

Thanks to its optimized electronics and low losses, it allows to reduce the number of amplifiers required and simplifies deployment in the design of collective installations, preserving the signal quality throughout the process. Furthermore, it is fully indicated for use in GPON installations.

This device is part of the Overlight system, that distributes satellite and terrestrial signals to multiple users through a single optical fiber.

Ref.	237650
EAN13	8424450319291

Packaging info

Box	1 pcs.
------------	--------

Physical data

Net weight	840.00 g
Gross volume	2.80 dm ³

Gross weight	960.00 g
Width	149.00 mm
Height	130.00 mm
Depth	43.00 mm
Main product weight	670.00 g

Highlights

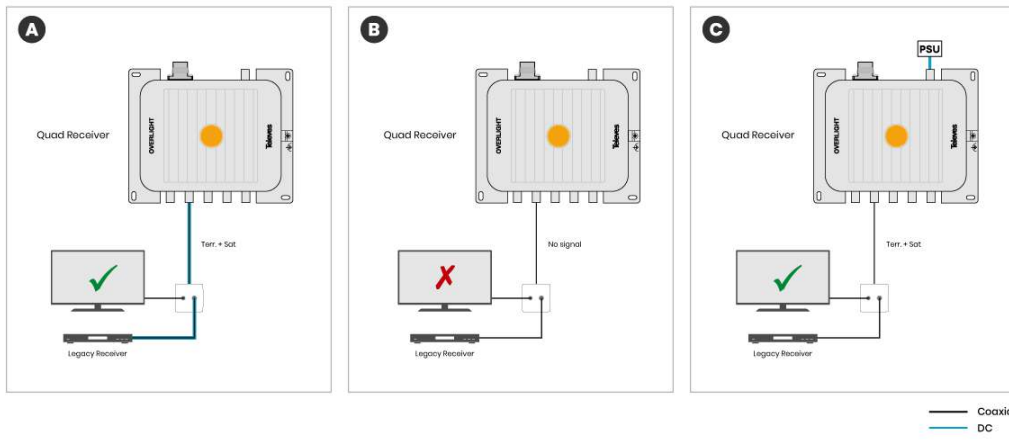
- Very compact in dimensions and weight
- Compatible with GPON deployments
- Fiber optic distribution with low losses and immunity to interference
- Robust, high-screening chassis made of Zamak for interference protection
- Can be wall-mounted using screws
- Two powering options: remotely through the receiver (STB) or via power supply with the included adapter cable
- 100% European design, quality, and manufacturing

Application example

A) If the receiver is powered through the STB, both terrestrial and satellite signals are delivered.

B) If the STB is turned off or does not provide enough power to the receiver, no signal is delivered.

C) If the receiver is powered through an external power supply unit (ref. 830209/732210), both terrestrial and satellite signals are always delivered. The receiver includes a jack-to-F-connector adapter cable for connection.



Technical specifications : Ref. 237650

Number of outputs			4
TERR number of outputs			4
Legacy number of outputs			4
Inputs/Bands		TERR	Legacy
Output frequency range	MHz	87 ... 694	950 ... 2150
Output level	dBmV	9 ... 13	4 ... 11
Input wavelength	nm		1200 ... 1600
Optical input power	dBm		-13 ... -6
Optical return losses	dB		> 40
Optical receiving device			InGaAs PIN photodiode
Optical connectors			SC/APC
RF connectors			"F" female
Impedance	Ω		75
Powering	Vdc		12 ... 18
Max current consumption (@12V)	mA		790
Max current consumption (@18V)	mA		560
Operating temperature	$^{\circ}\text{F}$		23 ... 113

These measurements are conditioned to the use of an Overlight transmitter