



ArantiaCast license for TVs with Google Cast

The guest will feel at home

One-shot license that allows the integration of the ArantiaCast solution into Philips, LG and Samsung TVs with Google Cast, without the need for additional hardware. It enables guests to stream multimedia content from a wide range of apps from their mobile device to the TV in their room, while still being able to use their phone freely.

Thanks to the ArantiaCast system, guests will only have access to the TV in their room, and their data will be automatically deleted upon checkout, thus ensuring maximum privacy. A license is required for each TV.

Ref.	831491
Logical ref.	ACAST-LIZTV
EAN13	8424450317990

Packaging info

Unit	1 pcs.
-------------	--------

Highlights

- Guests will only be able to stream content to the TV in their room, with no access to other TVs in the hotel

- The system allows for the automation of mobile device disconnection at checkout, both in environments with and without PMS
- A secure system that ensures guest privacy. Additionally, it includes a credential deletion button for executed applications
- Possibility of connecting multiple mobile devices to the same television in the room
- The ArantiaCast system enables remote monitoring of installed devices
- Option to customize the welcome and pairing screen content, allowing the establishment to include its own background image and logo (check compatible TVs)
- The administration tool includes a usage report section, displaying general system statistics from the first recorded event
- Grants access to ArantiaCast updates for 2 years
- More than 3,000 applications available
- Compatible with LG, Philips and Samsung TVs with Google Cast built-in
- Compatible with iOS 14.0 and Android 8.0 devices or later versions

Discover

ARANTIACAST SYSTEM

ARANTIACAST is a professional casting solution designed for hospitality environments where there are numerous users and ensuring the guests' privacy should be one of the main concerns for the hotelier. The guests' mobile device can only be paired to the TV in their room and the pairing can be easily achieved just by scanning a QR code on the TV.

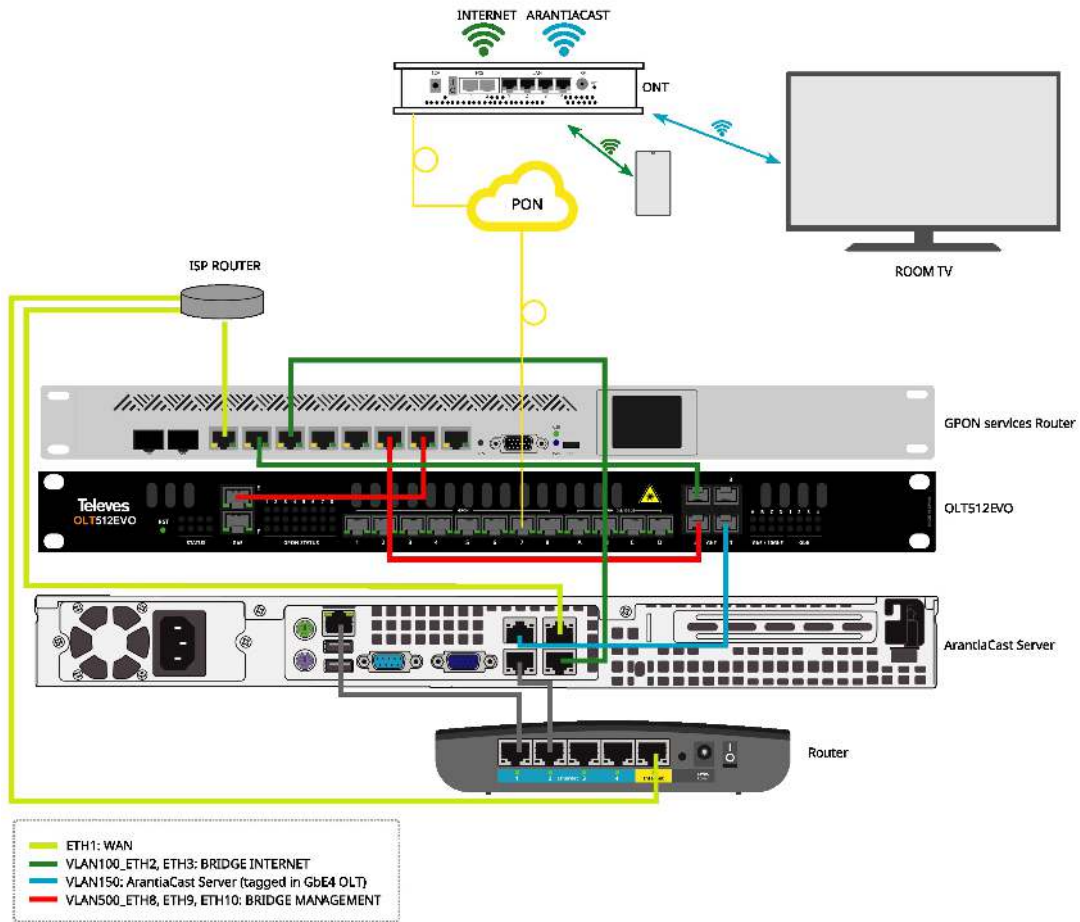
The unobtrusive installation does not detract from any aesthetic or functional aspect of the room. It only needs to be integrated in the premises' existing Wi-Fi network. Furthermore, it allows network remote monitoring and provides an outstanding added value to the hotel.

DIFFERENCES BETWEEN ARANTIACAST AND MIRRORING

ARANTIACAST	MIRRORING
The contents of an application are transferred to a different device	The image displayed on an application transferred to a different device

Both devices can run different applications	The same screen is displayed on both devices
The device to which the application is transferred only displays the application's execution	All the content displayed on the portable device is displayed on the second device's screen
Multitasking: the mobile device can run other applications	No multitasking: all the actions performed on the mobile device are displayed on the secondary device
The mobile device's screen can be disabled, left idle	Should the screen of the mobile device turn black, so would the screen of the secondary device
Not all apps are compatible	Everything can be displayed on the screen of the secondary device
Compatible with iOS & Android mobile devices	Compatibility with different platforms is not guaranteed

Application example



Functionalities

Content customization

ArantiaCast adapts to image and brand of the establishment



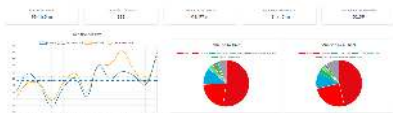
With this functionality it is possible to customize the welcome screen of the ArantiaCast service. The administrator can define the logo, the background image and the content that will be displayed on the screen when the guest access the service, contributing to enhance the establishment's own brand.

In order to complete this user experience, there is also the option to customize the web address that guests access during the pairing

process of their devices, both with a characteristic logo and a background image chosen by the establishment itself.

System usage reports

Detailed summary of each connection



Within the ArantiaCast administration tool we can find a complete section of system usage reports. In it, the administrator will be able to consult the general statistics of the system since the date of the first recorded event: total duration of all casting sessions, total number of casting sessions carried out, average duration of each casting session, average daily casting time and average daily number of casting sessions.

The administrator can obtain specific information thanks to the to sort statistics by room, start date and end date, as well as the option to display three charts: Daily chart, App use by time and App use by number.

To obtain raw and complete information, the tool offers the possibility of exporting the data displayed on the screen both in PDF format (where the screen shown on the server is replicated) and in CSV (in which the relevant statistics and data are captured and used to create reports and graphs).

Remote management and monitoring of installed devices

Installation under control



To simplify the tasks of monitoring and error detection in the ArantiaCast system, there is an option to check the status of each of the devices, displaying information on the coverage level and the signal quality. It is also possible to restart and change the name of the devices, as well as set the deletion of linked devices at a specific time or at check out.

PMS integration

Processes automation to simplify management tasks



The ArantiaCast system integrates with the most widely used PMS on the market, contributing to automate the processes related to the guests' stay, such as defining a specific communication language or performing an automatic checkout without the need for interaction.

Services

Stream your favourite content



The system allows the content streaming from the user's personal device straight to the TV by following these three easy steps:

1. Connect to the Hotel Wi-Fi
2. Scan the QR code or, failing that, visit the established web address and enter the corresponding code
3. Tap the casting icon in your cast-enabled app and enjoy!

Enjoy a multitude of entertainment options



ArantiaCast represents the perfect solution for the user's entertainment, with more than 3,000 applications available. Enjoy a wide variety of content such as series, movies, music, news, sports, etc. as if you were at home.

Guests' privacy guaranteed



The system guarantees the guests' privacy, so the streaming will only be allowed on the TV of the guest's room, without login or personal information.

It can manage the disconnection of the guests' device at the time of check out. In addition, it presents an unobtrusive and secure installation, which only needs to be integrated in the premises' existing Wi-Fi network.

Technical specifications : Ref. 831491

Technical Compatibility and Third-Party Infrastructure Disclaimer

The performance and functionality of the Televes provided casting and entertainment solutions are contingent upon the client's existing technological infrastructure. Accordingly:

- **Hardware Compatibility:** It is the client's sole responsibility to verify and ensure that their current TV inventory (manufacturers, models, and firmware versions) is fully compatible, at any time, with the technical requirements of our solution.
- **Streaming Services:** The availability, operation, and usage policies of third-party applications (such as Netflix, HBO, Disney+, YouTube, etc.) are independent of Televes. The client and the end-user are responsible for complying with the terms and conditions of these providers and maintaining the necessary subscriptions.
- **Network and Connectivity:** The client must ensure that their network infrastructure (Wi-Fi/LAN) meets the minimum requirements for bandwidth, port configuration, and network isolation necessary for content streaming.
- **Third-Party Updates:** Televes does not accept liability for service disruptions resulting from software updates, API changes, or modifications to terms of service implemented by hardware manufacturers or third-party content providers.