



ArantiaCast Kit: Pre-configured 4K Dongle + Security Cable + License

The guest will feel at home

Dongle belonging to the ArantiaCast solution, designed to be installed on each television. It allows guests to stream multimedia content from a wide range of apps from their mobile device to the TV in their room while continuing to use their phone freely. It supports 4K Ultra HD and HDR content, providing guests with a crisp visual experience with enhanced contrast and improved colors.

Thanks to the ArantiaCast system, guests will only have access to their room's TV, and their data will be automatically deleted upon checkout, ensuring maximum privacy. System access license (ref. 831412) included.

Ref.	831493
Logical ref.	ACAST-D4KLT
EAN13	8424450322444

Packaging info

Box	1 pcs.
------------	--------

Physical data

Net weight	120.00 g
Gross volume	0.38 dm ³
Gross weight	200.00 g
Width	61.00 mm

Height	77.00 mm
Depth	165.00 mm
Main product weight	120.00 g

Highlights

- Guests will only be able to stream content to the TV in their room, with no access to other TVs in the hotel
- The system allows the mobile device to be disconnected automatically at checkout or at a scheduled time each day
- A secure system that ensures guest privacy. Additionally, it includes a credential deletion button for executed applications
- Possibility of connecting multiple mobile devices to the same television in the room
- Discreet and secure installation of devices on televisions, thanks to the included security cable
- The ArantiaCast system enables remote monitoring of installed devices
- Option to customize the welcome and pairing screen content, allowing the establishment to include its own background image and logo
- The administration tool includes a usage report section, displaying general system statistics from the first recorded event
- Supports 4K Ultra HD resolution and HDR10, HDR10+, and HLG formats for high dynamic range content playback
- More than 3,000 applications available
- Flexible network connection, either via WiFi or through an Ethernet port
- Includes power supply and cable for powering via Micro-USB
- Compatible with any TV with an HDMI® connector
- Compatible with iOS 14.0 and Android 8.0 devices or later versions

Discover

ARANTIACAST SYSTEM

ARANTIACAST is a professional casting solution designed for hospitality environments where there are numerous users and ensuring the guests' privacy should be one of the main concerns for the hotelier. The guests' mobile device can only be paired to the TV in their room and the pairing can be easily achieved just by scanning a QR code on the TV.

The unobtrusive installation does not detract from any aesthetic or functional aspect of the room. It only needs to be integrated in the premises' existing Wi-Fi network. Furthermore, it allows network remote monitoring and provides an outstanding added value to the hotel.

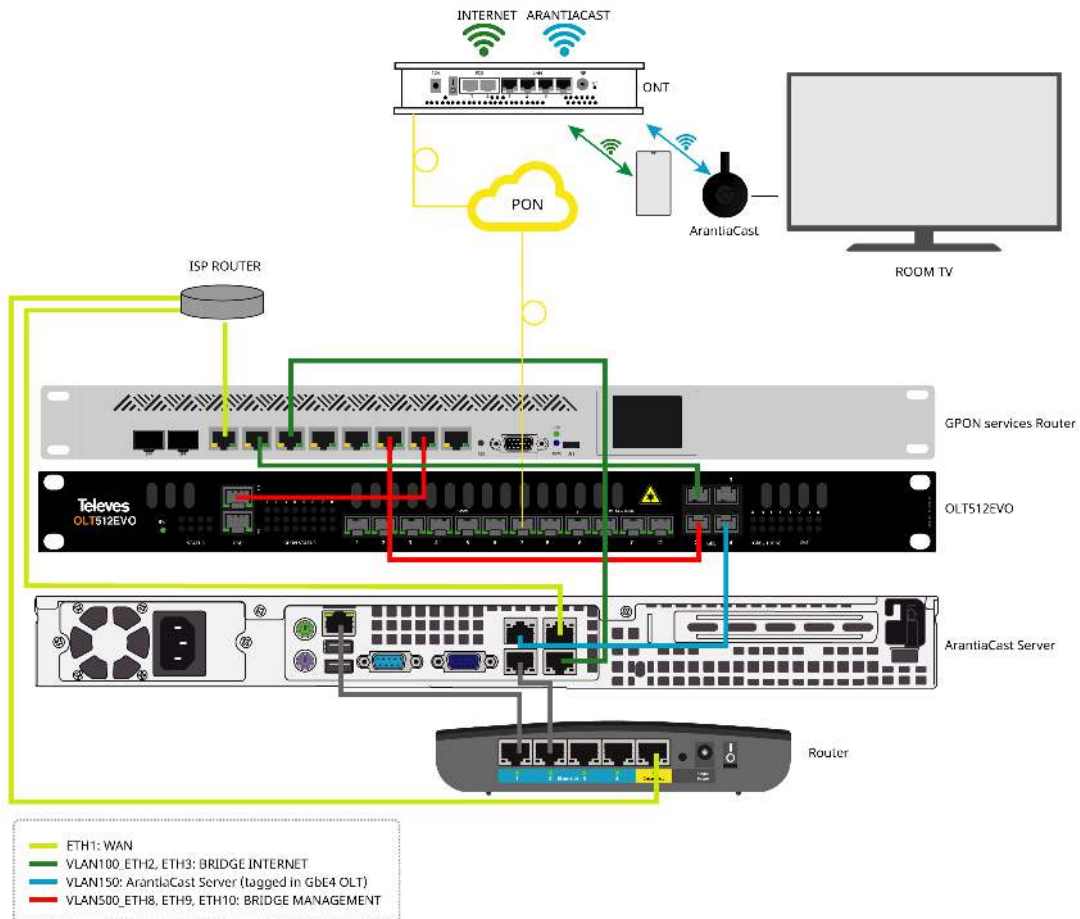
DIFFERENCES BETWEEN ARANTIACAST AND MIRRORING

ARANTIACAST	MIRRORING
The contents of an application are transferred to a different device	The image displayed on an application transferred to a different device
Both devices can run different applications	The same screen is displayed on both devices
The device to which the application is transferred only displays the application's execution	All the content displayed on the portable device is displayed on the second device's screen
Multitasking: the mobile device can run other applications	No multitasking: all the actions performed on the mobile device are displayed on the secondary device
The mobile device's screen can be disabled, left idle	Should the screen of the mobile device turn black, so would the screen of the secondary device
Not all apps are compatible	Everything can be displayed on the screen of the secondary device
Compatible with iOS & Android mobile devices	Compatibility with different platforms is not guaranteed

Considerations

The terms HDMI, HDMI High-Definition Multimedia Interface, HDMI Trade dress and the HDMI Logos are trademarks or registered trademarks of HDMI Licensing Administrator, Inc.

Application example



Functionalities

Content customization

ArantiaCast adapts to image and brand of the establishment

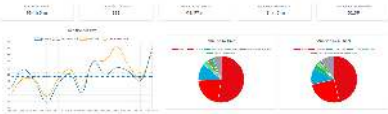


With this functionality it is possible to customize the welcome screen of the ArantiaCast service. The administrator can define the logo, the background image and the content that will be displayed on the screen when the guest access the service, contributing to enhance the establishment's own brand.

In order to complete this user experience, there is also the option to customize the web address that guests access during the pairing process of their devices, both with a characteristic logo and a background image chosen by the establishment itself.

System usage reports

Detailed summary of each connection



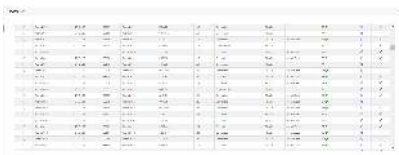
Within the ArantiaCast administration tool we can find a complete section of system usage reports. In it, the administrator will be able to consult the general statistics of the system since the date of the first recorded event: total duration of all casting sessions, total number of casting sessions carried out, average duration of each casting session, average daily casting time and average daily number of casting sessions.

The administrator can obtain specific information thanks to the to sort statistics by room, start date and end date, as well as the option to display three charts: Daily chart, App use by time and App use by number.

To obtain raw and complete information, the tool offers the possibility of exporting the data displayed on the screen both in PDF format (where the screen shown on the server is replicated) and in CSV (in which the relevant statistics and data are captured and used to create reports and graphs).

Remote management and monitoring of installed devices

Installation under control

The image shows a screenshot of a table with multiple columns and rows. The columns likely represent device ID, name, status, and management actions. The rows contain data for several devices, with some cells containing icons or status indicators. The table is presented in a standard web interface format.

To simplify the tasks of monitoring and error detection in the ArantiaCast system, there is an option to check the status of each of the devices, displaying information on the coverage level and the signal quality. It is also possible to restart and change the name of the devices, as well as set the deletion of linked devices at a specific time or at check out.

PMS integration

Processes automation to simplify management tasks



The ArantiaCast system integrates with the most widely used PMS on the market, contributing to automate the processes related to the guests' stay, such as defining a specific communication language or performing an automatic checkout without the need for interaction.

Services

Stream your favourite content



The system allows the content streaming from the user's personal device straight to the TV by following these three easy steps:

1. Connect to the Hotel Wi-Fi
2. Scan the QR code or, failing that, visit the established web address and enter the corresponding code
3. Tap the casting icon in your cast-enabled app and enjoy!

Enjoy a multitude of entertainment options



ArantiaCast represents the perfect solution for the user's entertainment, with more than 3,000 applications available. Enjoy a wide variety of content such as series, movies, music, news, sports, etc. as if you were at home.

Guests' privacy guaranteed



The system guarantees the guests' privacy, so the streaming will only be allowed on the TV of the guest's room, without login or personal information.

It can manage the disconnection of the guests' device at the time of check out. In addition, it presents an unobtrusive and secure installation, which only needs to be integrated in the premises' existing Wi-Fi network.

Technical specifications : Ref. 831493

##			1080i/p / 2160p / 480i/p / 576i/p / 720p
Video format			Dolby Vision / HDR10 / HDR10+ / HLG
Audio format			Dolby Atmos / Dolby Digital / Dolby Digital Plus
Wi-Fi			Yes
WiFi standard			802.11 b/g/n/ac (2x2) 2.4/5 GHz
Bluetooth			Yes
Ethernet			Yes
Number of Gigabit Ethernet ports (10/100/1000BaseT)			1
Display port			HDMI®
HDCP			HDCP 2.2
CPU/SoC			S905Y4-B
GPU			ARM Mali-G31 MP2
RAM	GB		2
RAM type			DDR4
Flash Memory capacity	GB		8
Power supply connector			Micro-USB
Powering	Vdc		5
Current consumption Max	A		1
Max. power consumption	W		4.5
Operating temperature	°F		32 ... 122